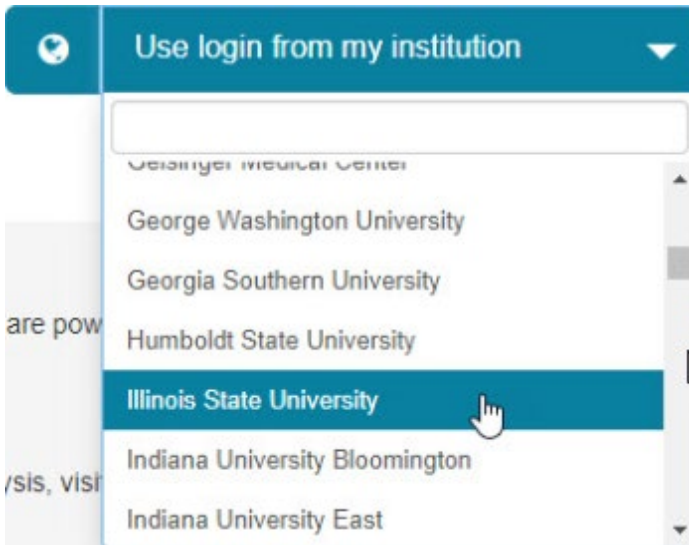


# Pivot-PR Account Setup

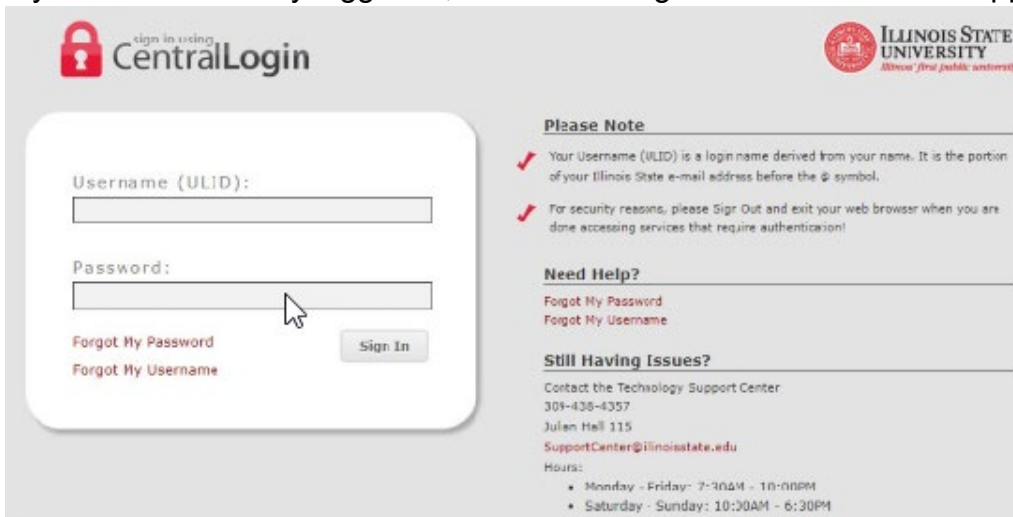
1. Open your browser and go to <https://pivot.proquest.com>
2. On the right side of the screen press the “Use login from my institution” button



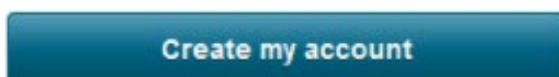
3. Choose Illinois State University from the list of institutions



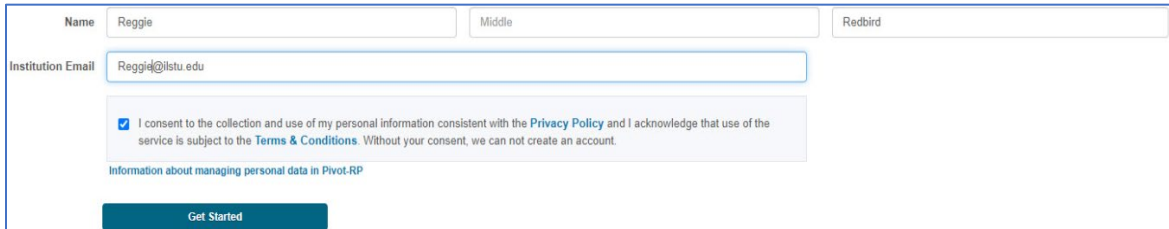
4. If you are not already logged in, the CentralLogin screen for ISU will appear



5. Press the “Create my account” button

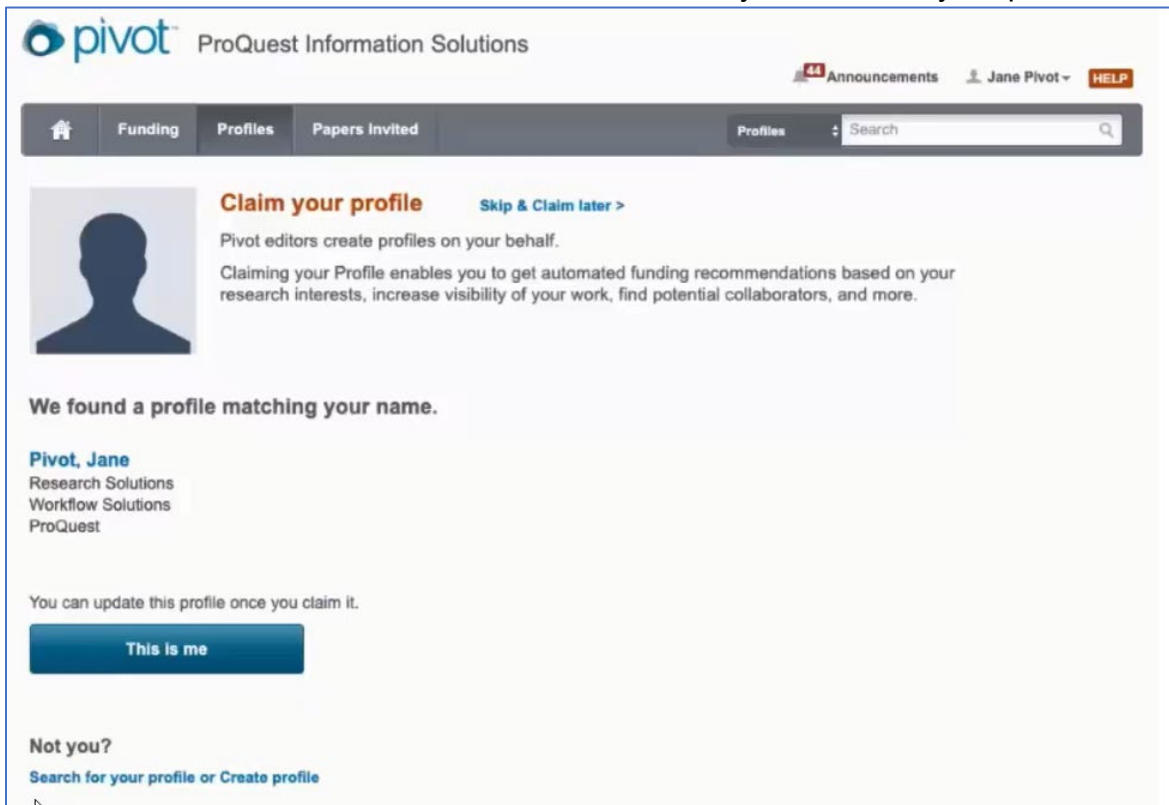


- You will be redirected to a screen in Pivot where you are prompted to finish creating your account by providing your information. Complete the required fields, check the consenting permission box, and press the “Get Started” button



The screenshot shows a registration form with the following fields: Name (with sub-fields for First Name 'Reggie', Middle, and Last Name 'Redbird'), Institution Email ('Reggie@ilstu.edu'), and a consent checkbox. The consent text reads: "I consent to the collection and use of my personal information consistent with the Privacy Policy and I acknowledge that use of the service is subject to the Terms & Conditions. Without your consent, we can not create an account." Below the consent box is a link for "Information about managing personal data in Pivot-RP" and a "Get Started" button.

- You will be redirected to a screen in Pivot where you can claim your profile by pressing the “This is me” button. If your profile does not appear, you can press the “Search Profiles or Create Profile” button where you can build your profile.



The screenshot shows the Pivot user interface. At the top, it says "pivot ProQuest Information Solutions" with a notification for "44 Announcements" and a user profile for "Jane Pivot". The navigation menu includes "Funding", "Profiles", and "Papers Invited". A search bar is present. The main content area features a "Claim your profile" section with a silhouette icon, a "Skip & Claim later >" link, and text explaining that Pivot editors create profiles on behalf of users and that claiming a profile enables automated funding recommendations. Below this, it states "We found a profile matching your name." and shows a profile for "Pivot, Jane" with sub-entities "Research Solutions", "Workflow Solutions", and "ProQuest". A "This is me" button is provided to claim the profile. At the bottom, there is a "Not you?" section with a link to "Search for your profile or Create profile".

- You will receive an email asking you to verify that you are the person that set up this account. Select the “Click here” link to be redirected back to Pivot where you can complete your profile

[This message came from an external source. If suspicious, report to [abuse@ilstu.edu](mailto:abuse@ilstu.edu)]

Thank you for your interest in claiming your Profile in Pivot-RP.  
[Click here](#) to verify that you are [REDACTED] and complete the claim process.  
If you did not try to claim your profile, someone has mistakenly selected your email address while trying to access their profile. To protect your privacy, we only send this information to the email address on file in your account.  
For more information, visit the [ProQuest Pivot-RP](#) website.

For any questions/problems contact Eric Boerngen at [edboern@ilstu.edu](mailto:edboern@ilstu.edu) or 309-438-3501.